



# MOVING YOUR BUSINESS FORWARD.

THE FUSO FE GAS TRUCK





# WELCOME TO THE INTERSECTION OF CAPACITY AND COMFORT.

It's everything on your work truck wish list, all beautifully combined in one highly evolved, medium-duty vehicle. By adding a gasoline engine option to our proven FE series, we've taken FUSO vocational performance to the next level.

Think of it: Generous capacity. Plenty of power. Simplified maintenance. And more interior comfort than ever. All of which make our newest FE GAS models the best low-cab-forward choice for your growing business.

As you'll see, we've taken the best FE features and made them better. From the rugged frame and roomy cab to the superb visibility and extended operating range, this is a truck meant to be driven every day. Add a General Motors V8 6.0L gasoline engine with an Allison 6-speed automatic transmission and you've got a powertrain that can handle any challenge. Top it off with interior upgrades that drivers will love, and you're ready. For anything.





## TRUCKS THAT WORK AS HARD AS YOU DO.

While each FE GAS model has its own resume, they all share some very impressive features. Such as a ladder-style frame that's lighter than the competition, yet 28% stronger. A 40-gallon, in-rail fuel tank—10 gallons more than the competition. And an engine that delivers 297 HP with 361 lb./ft. of torque for effortless hauling, whether you're navigating city streets or suburban neighborhoods.

But the real story here is the selection. Choose from two Class 4 models or the industry's first Class 5 gas-powered LCF. Pick your body and payload capacity, up to 11,945 lbs. Select seating from three to seven. Whether you go for the FE140, FE160 or FE180, you'll definitely have the right specs for the job ahead.



## FUSO FE140

The urban operator. As the lightest and most agile model in our gas-powered lineup, the FE140 makes easy work of deliveries in any city situation.



## FUSO FE160 & FE160 CREW CAB

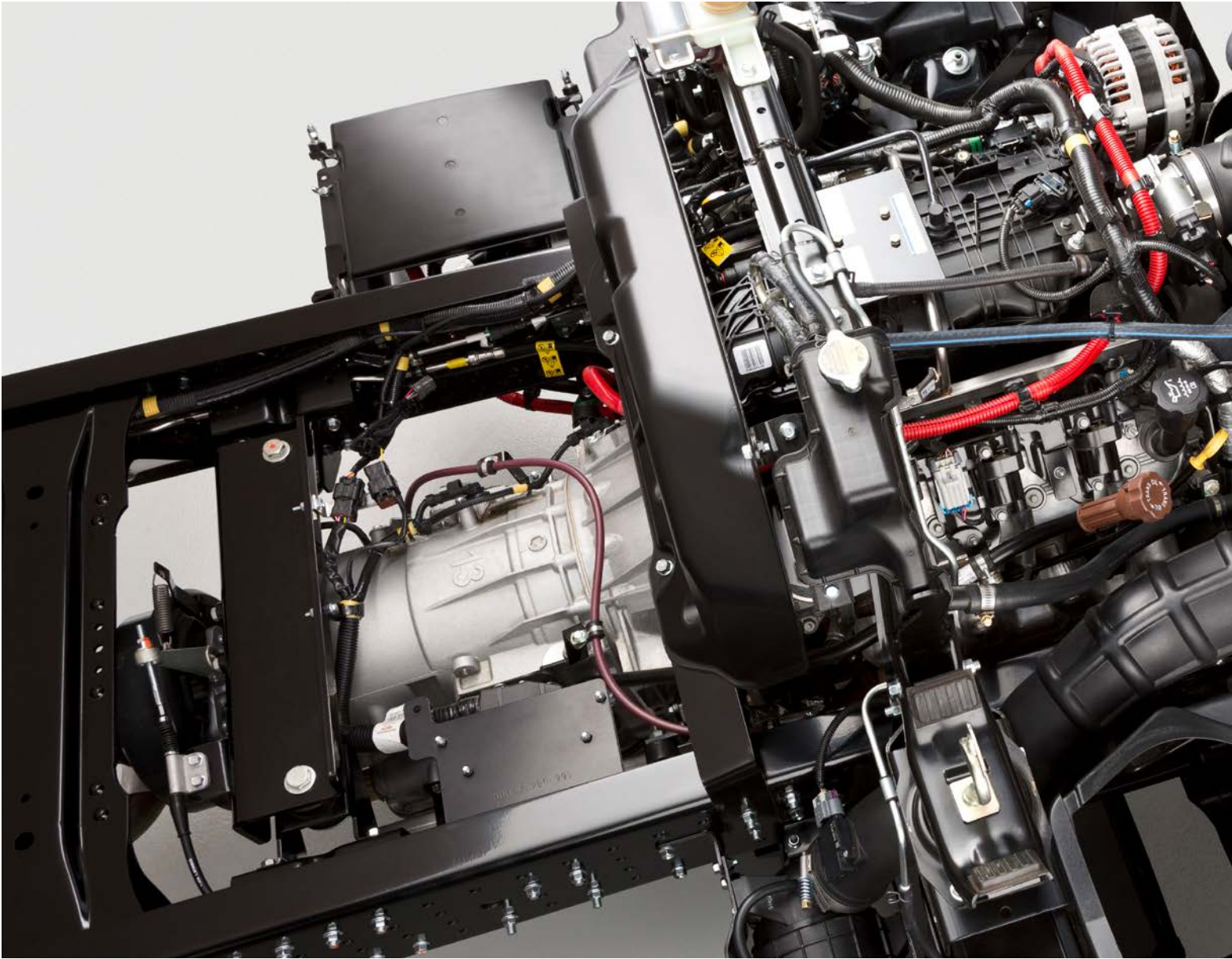
With versatility for big jobs like construction and landscaping, the FE160 provides responsive steering and comfortable driving that makes any job easier. If you need more hands on deck, the four-door FE160 Crew Cab seats up to seven people with plenty of room for storage.



## FUSO FE180

This heavy mover is in a class by itself. With a GVWR of 17,995 lbs. and a body and payload of 11,885 lbs., the FE180 delivers plenty of muscle without sacrificing agility and maneuverability. What can you do with all that extra capacity? More. Lots more.





## **POWER TEAM: GM ENGINE AND ALLISON TRANSMISSION.**

### **A CHASSIS WITH ROOM TO GROW.**

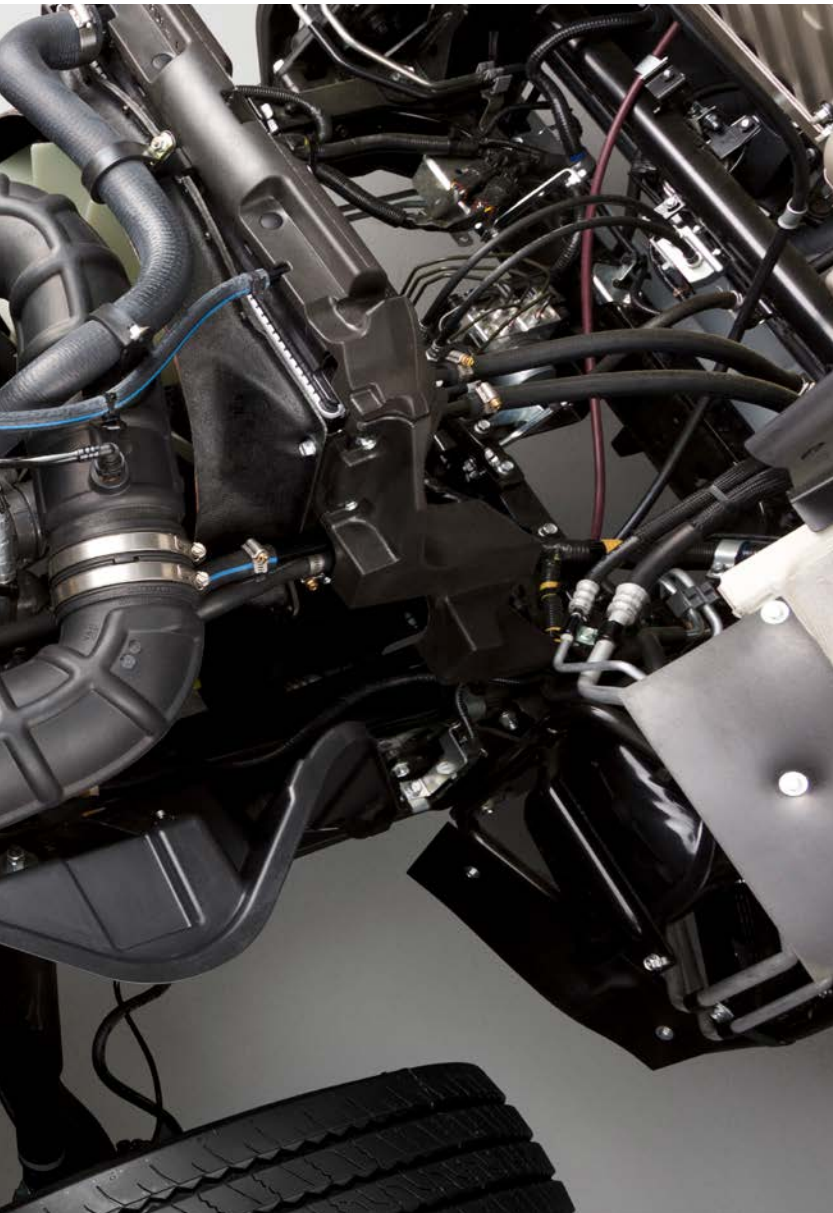
Tilt the cab forward and you'll see we've streamlined all routing for durability and easier access. Sensitive fuel and wiring lines are out of harm's way, offering clean frame rails that provide additional space for toolboxes and side-mounted equipment. Note that we've kept our standard 33.5" frame and cab-chassis

configurations. Upfitters will find the same wheelbases, box sizes and body attachment capability they've enjoyed with our diesel trucks. Technicians will appreciate the spacious layout for servicing and maintenance.

### **A V8 GAS ENGINE THAT OUTPERFORMS DIESEL.**

The powertrain in our gas-powered models has been strategically designed to meet your needs for smooth power and lower operating costs. The PSI-GMPT 6-liter V8 engine has twice the displacement of our diesel option, giving you

more horsepower and more torque. It outperforms typical diesel-powered trucks within the same class size, with the added advantage of less complex emissions and lower maintenance costs.



**Going the extra mile:** FUSO provides the extended Allison Transmission Warranty standard. You get 5-year/unlimited mileage coverage — and even more peace of mind.

## THE ALLISON 1000 SERIES™ : SMART SHIFTING MEETS FUEL ECONOMY.

With uninterrupted uptime in mind, we've equipped each model with the best-in-class Allison 1000 Series 6-speed automatic transmission. Renowned for its reliability and efficiency, Allison's patented torque converter multiplies engine torque and transfers it smoothly to the wheels. Designed for the start-and-stop demands of urban delivery, it's a transmission with excellent steep-grade startability and low-speed maneuverability.

The Allison also protects your bottom line with FuelSense 2.0® featuring DynActive™ Shifting, a standard for each FE GAS truck. Instead of shifting gears based on a data table of fixed shift points, DynActive technology

continually refines each shift using a proprietary learning algorithm. This provides the optimal balance between performance and fuel efficiency for each operator's specific duty cycle. The result is a 2% to 6% improvement in fuel economy, depending on the application. FuelSense 2.0 management includes a Neutral-at-Stop feature that further reduces fuel consumption.

And thanks to its commercial-grade design, the Allison 1000 has provisions for an optional power takeoff (PTO) that can drive a wide range of vocational truck accessories like lift bodies and dispensing pumps.

# AN INTERIOR DESIGNED FOR COMFORT, CONVENIENCE AND CONTROL.

At FUSO, we're big on comfort. That's why the spacious interior of our FE GAS models has been tailored to the driver's needs. The noise-insulated, well-sprung cab makes longer journeys just as pleasant as short trips. For frequent in and out, you'll appreciate the low entry step, adjustable steering wheel, and dash-mounted shifter.

## AN INTERIOR THAT BLENDS ERGONOMIC DESIGN AND PRACTICAL STYLING.

The FE interior works hard to keep you comfortable. Instrument cluster colors have been revised for better visibility, and an LED cabin light keeps the cab functional during dawn or dusk trips. Distinctive red seat belts are a FUSO trademark that encourages everyone to buckle up. A panoramic windshield and a driver-to-ground line of sight of only 6 ft. ensure you stay focused on the task ahead.



There's room for three in the standard cab, with a heavy-duty driver's seat that offers adjustable lumbar support. We've added handy storage, including an overhead console, floor tray and sun visor pocket. Black seats and dark gray floor panels keep the interior décor fashionably functional, while silver trim adds a contemporary touch to the stereo frame, shifter panel and steering wheel emblem.



An infinitely adjustable steering wheel and dash-mounted shifter give drivers more control, while instruments and displays are always within easy reach or view. By moving the shifter off the floor, we create more leg room and easier access for passengers.



Maintain a comfortable cab environment with a standard air-conditioning system. Superior insulation preserves heating and cooling, and helps keep road noise from reaching the cab interior.

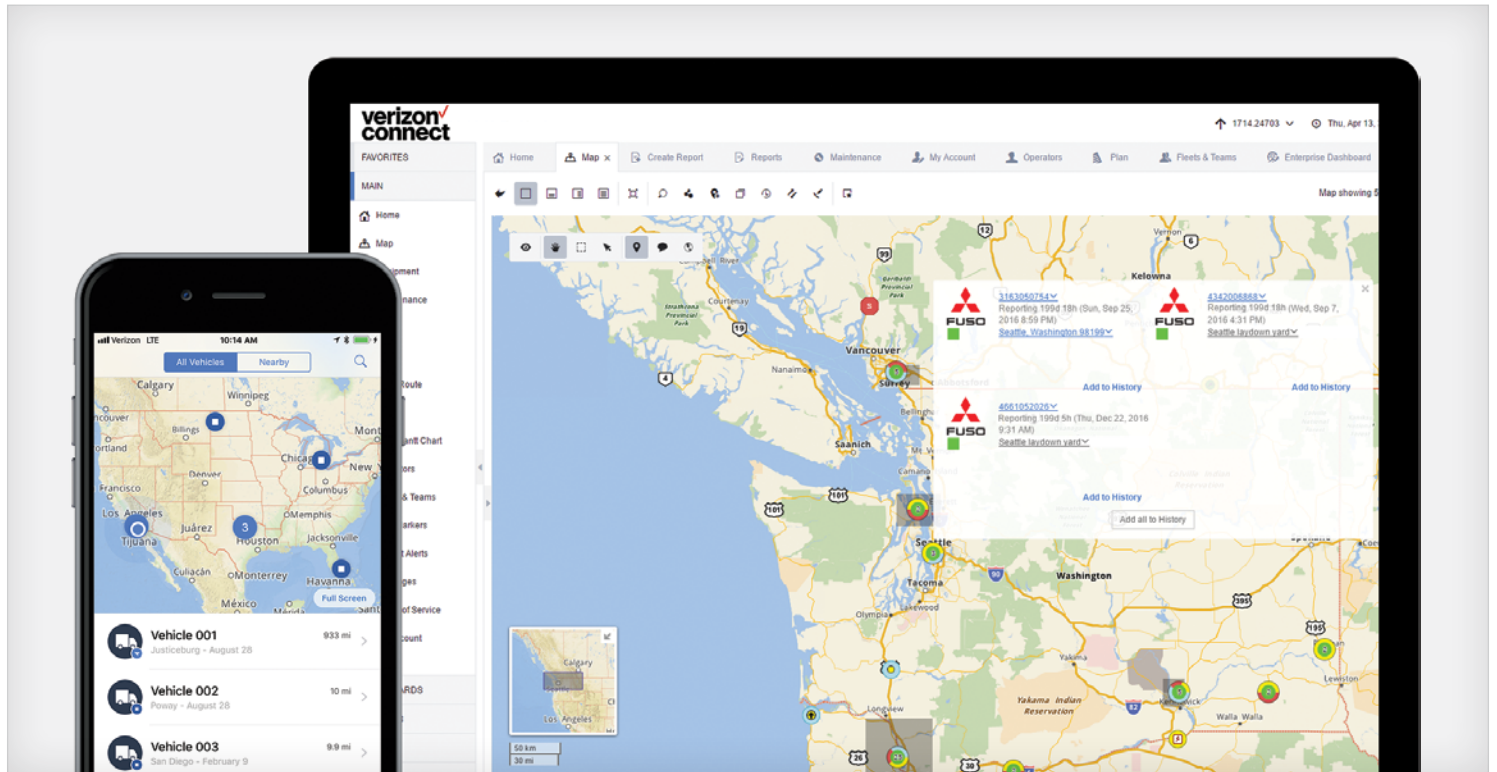


# STAY CONNECTED TO YOUR TRUCKS AND DRIVERS.

## VERIZON CONNECT. CLOUD-BASED TELEMATICS. DOWN-TO-EARTH DIAGNOSTICS.

No matter how many trucks you operate, you want to keep them productive, profitable, and on schedule. That's why FUSO gas-powered trucks include the latest telematics technology from Verizon Connect. Our data-driven software subscription links you, your trucks, and your drivers — all from your smartphone, tablet, or other connected device.

Verizon Fleet Essential simplifies and automates a wide range of fleet management duties, including vehicle diagnostics, driver behavior, and fleet monitoring. Verizon Connect Fleet for FUSO is included as a complimentary one-year subscription with your truck purchase.

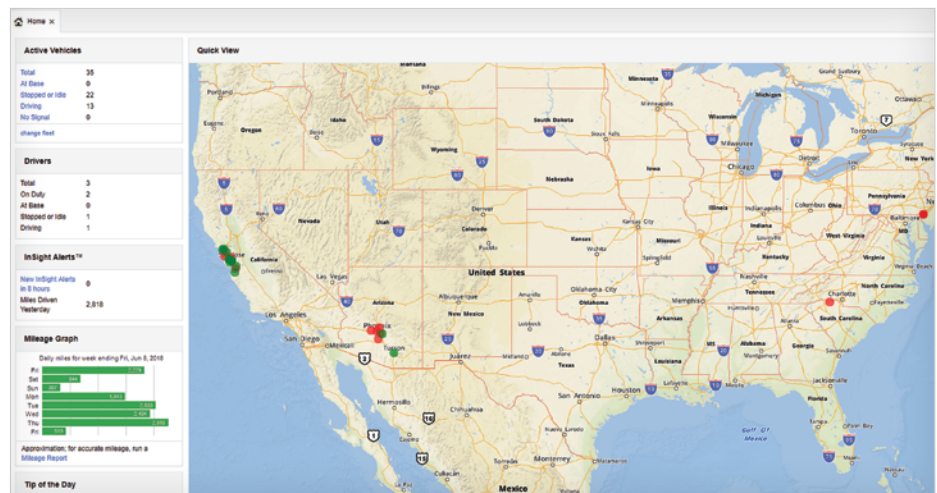


## ENCOURAGE SAFER, SMARTER DRIVING BEHAVIOR.

Get driver status reports, including vehicle location, driving behaviors, speeding status, and job start times. With the ability to check in on team members as needed, you'll have better visibility into unnecessary idling, unapproved driving, and associated fuel waste. It's all information that lets you monitor and manage your fleet more closely — and more economically.

## MINIMIZE DOWNTIME, MAXIMIZE OPERATIONS.

Verizon Connect Fleet for FUSO helps fleet maintenance managers make strategic decisions like which vehicles to service and when. You'll have access to diagnostic details and alerts in real time, which saves time and lets you get more done. Easy access to your fleet's data helps improve planning while



reducing overtime, costs and unauthorized vehicle use. You'll be able to monitor and analyze fleet and driver performance 24 hours a day, no matter where your trucks — and you — happen to be.

# SPECIFICATIONS THAT GET DOWN TO BUSINESS.

	FE140 GAS	FE160 GAS
<b>CAB CONFIGURATION</b>	SINGLE	SINGLE & CREW
<b>VEHICLE WEIGHT CLASS</b>	4	4
<b>WEIGHT RATINGS</b>		
GVWR/GCWR - pounds	14,500 / 22,215	15,995 / 23,710
GAWR (front/rear) - pounds	6,390 / 12,700	6,390 / 12,700
<b>BODY / PAYLOAD CAPACITY</b>		
Maximum (estimated) - pounds	8,800	10,295 (single) 9,715 (crew)
<b>DIMENSIONS</b>		
Wheelbase	133.9" (E) 151.6" (G) 169.3" (H)	133.9" (E) 151.6" (G) 169.3" (H) 187.0" (K)
Overall length (cab/chassis)	228.5" 246.3" 264.0"	228.5" 246.3" 264.0" 281.7"
Overall height, est.	93.7"	93.7"
Overall width (not including mirrors)	84.4"	84.4"
Usable cab to rear axle	104.9" 122.6" 140.3"	104.9" 122.6" 140.3" 158.0" (single) 103.4" 121.1" (crew)
Body sizes accommodated	12' to 20'	12' to 20' (22' with FUSO review/approval)
<b>ENGINE</b>		
Model	FUSO PSI-GMPT, V8, 6.0L gasoline	FUSO PSI-GMPT, V8, 6.0L gasoline
Type	Gasoline	Gasoline
Displacement	6.0L (364 in <sup>3</sup> )	6.0L (364 in <sup>3</sup> )
Engine power - hp	297	297
Engine torque - lb-ft	361	361
Cruise control	Standard	Standard
Alternative fuels	CNG and LPG capable in future models (option)	CNG and LPG capable in future models (option)
<b>FUEL TANK</b>		
Capacity - gallons/location	40 / In-rail aft-axle	40 / In-rail aft-axle
<b>TRANSMISSION</b>		
Brand & model	Allison 1000 Series™	Allison 1000 Series™
Type	6-speed automatic, torque converter with lockup clutch	6-speed automatic, torque converter with lockup clutch
Control system	Electronic, closed-loop with adaptive shift mapping	Electronic, closed-loop with adaptive shift mapping
PTO provision	Torque converter turbine-driven spur gear (option)	Torque converter turbine-driven spur gear (option)
Shift selector	Dash-mounted	Dash-mounted
FuelSense® 2.0, with DynActive™	Standard	Standard
<b>FRAME</b>		
Type	C-channel, straight	C-channel, straight
Section modulus, per rail - in <sup>3</sup>	7.08	7.08
Yield strength - psi	56,565	56,565
Resistance bending moment, per rail - lb-in	400,410	400,410
Height/width - inches	32.8 / 33.5	32.8 / 33.5
Powder-coated frame	Standard	Standard
Premium anti-corrosion package**	Standard	Standard
<b>AXLE DATA</b>		
Ratings (front/rear) - pounds	6,835 / 13,230	6,835 / 13,230
Type (rear)	Single-reduction hypoid	Single-reduction hypoid
Ratio (rear)	5.285	5.285
Limited slip differential	Option	Option
<b>SUSPENSION</b>		
Type (front & rear)	Laminated leaf springs	Laminated leaf springs
<b>TIRES &amp; WHEELS</b>		
Configuration	Single front, dual rear	Single front, dual rear
Tire size/type	215/75R17.5 12PR LR:F hwy front / traction rear	215/75R17.5 12PR LR:F hwy front / traction rear
Wheel size - inches/type	17.5" x 6" /6-lug	17.5" x 6" /6-lug
<b>BRAKES</b>		
Service	Dual-caliper discs, vacuum/hydraulic	Dual-caliper discs, vacuum/hydraulic
Parking	Drum/driveline, internal expanding shoe	Drum/driveline, internal expanding shoe
ABS system	4-channel	4-channel
<b>STEERING</b>		
Type	Integral hydraulic boost	Integral hydraulic boost
Column adjustment	Tilt & telescoping	Tilt & telescoping
Turning diameter (min. by WB) - feet	40.0, 44.6, 49.5	40.0, 44.6, 49.5, 54.1 (single) 49.5, 54.1 (crew)
<b>ELECTRICAL</b>		
Battery	Maintenance-free / 750 CCA	Maintenance-free / 750 CCA
Alternator - amps	180	180
<b>CONNECTIVITY / ENTERTAINMENT</b>		
Verizon Connect Fleet Telematics	Standard	Standard
AM/FM/CD/USB, hands-free Bluetooth® radio	Option	Option
<b>SAFETY &amp; CONVENIENCE</b>		
Halogen headlamps	Standard	Standard
Daytime running lights	Standard	Standard
Front power-operated***, One-touch up/down windows****	Standard	Standard
Keyless entry	Standard	Standard
FUSO red high visibility seat belts	Standard	Standard
Mobileye® 6 Series collision avoidance system	Option	Option

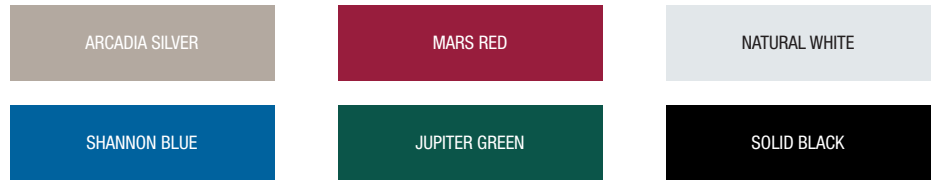
Your business deserves a truck tailored to its unique needs. That's why FUSO FE GAS trucks give you a broad range of specs and features to choose from. Available in various sizes and a range of interior trims, you'll find all the options you could ask for. Your local dealer will guide you in selecting the perfect truck for the job.

<b>FE180 GAS*</b>
SINGLE
5
17,995 / 25,710
6,390 / 12,700
11,885
133.9" (E) 151.6" (G) 169.3" (H) 187.0" (K)
228.5" 246.3" 264.0" 281.7"
96.7"
84.4"
104.9" 122.6" 140.3" 158.0"
12' to 20' (22' with FUSO review/approval)
FUSO PSI-GMPT, V8, 6.0L Gasoline
Gasoline
6.0L (364 in <sup>3</sup> )
297
361
Standard
CNG and LPG capable in future models (option)
40 / In-rail aft-axle
Allison 1000 Series™
6-speed automatic, torque converter with lockup clutch
Electronic, closed-loop with adaptive shift mapping
Torque converter turbine-driven spur gear (option)
Dash-mounted
Standard
C-channel, straight
7.08
56,565
400,410
35.8 / 33.5
Standard
Standard
6,835 / 13,230
Single-reduction hypoid
5.714
Option
Laminated leaf springs
Single front, dual rear
225/70R19.5 12PR LR:F hwy front / traction rear
19.5" x 6.75" /6-lug
Single-caliper discs, vacuum/hydraulic
Drum/driveline, internal expanding shoe
4-Channel
Integral hydraulic boost
Tilt & telescoping
35.6, 41.5, 46.1, 51.0
Maintenance-free / 750 CCA
180
Standard
Option
Standard
Standard
Standard
Standard
Standard
Option

# OPTIONS TO FIT YOUR IMAGE.

Image is important. So is a cab with a quality paint finish that's durable. Choose from six cab colors, all developed to deliver a polished, professional appearance that fits your business and applications.

## CAB COLORS



All models are available immediately in white. Other colors shown (except Solid Black) may be special-ordered at no extra charge. Additional lead time may be required. Accuracy of indicated hues is limited by paper/electronic reproduction.

## FABRIC STYLE



## OPTIONAL FEATURES

- Mobileye Collision Avoidance System
- Chrome Trim Package
- Clarion AM/FM Radio with hands-free Bluetooth®
- Floor Mats
- Roof Air Deflectors
- Limited-Slip Differential (LSD)
- Engine Block Heater Kit
- PTO Option for Allison Transmission
- Heated Mirrors
- Wheel Simulators

## FUSOFIRST™ MAKES YOUR UPTIME OUR PRIORITY.

Each FE GAS truck comes standard with our FUSOFirst comprehensive owner support program. It includes 24/7 roadside assistance, a web-friendly mobile app, plus access to owner/operator training and education.

## WARRANTY COVERAGE THAT PROTECTS YOUR INVESTMENT.

FUSO protects your new FE investment with a generous warranty package†. We combine 3-year/36,000 mile bumper-to-bumper, 5-year frame coverage, and 5-year/75,000-mile powertrain limited warranties into one strong standard warranty.

In addition, we include a 2-year extension to the standard 3-year Allison transmission†† warranty as a free standard. The truck's transmission is now covered by a 5-year/unlimited mileage warranty. See your local certified Allison Transmission Service Center for more details.

† Please see your local dealer for details and warranty limitations.

†† Allison Transmissions are warranted separately by Allison and work is performed by Allison's authorized sales and service locations.

Please note: Changes may have been made to the product since this publication went to press (06/2018). FUSO reserves the right to make changes to the information, design and specification without notice. The illustrations may show accessories and items of special equipment which are not part of standard specification. This brochure may contain models and services which are not available in certain countries. For the most current information, availability and pricing, please contact your nearest authorized FUSO truck dealership.

### SPECIFICATIONS SUBJECT TO CHANGE WITHOUT NOTICE. Chassis-cab dimensions, weights are +/- 3%.

\*Available 2019 \*\* Frame and frame-mounted components \*\*\*Driver and passenger side \*\*\*\*Driver side only



**MITSUBISHI FUSO TRUCK OF AMERICA, INC.**

2015 Center Square Road, Logan Township, NJ 08085

For the dealer nearest you, or for more information, visit our website at:  
**MITFUSO.COM**

PRINTED IN THE U.S.A.

© 2018 MITSUBISHI FUSO TRUCK OF AMERICA, INC.

All rights reserved. Mitsubishi Fuso Truck of America, Inc., is a subsidiary of Mitsubishi Fuso Truck and Bus Corporation, Kawasaki, Japan, an integral part of the Daimler Trucks Division of Daimler AG.



MITSUBISHI FUSO TRUCK OF AMERICA, INC.